

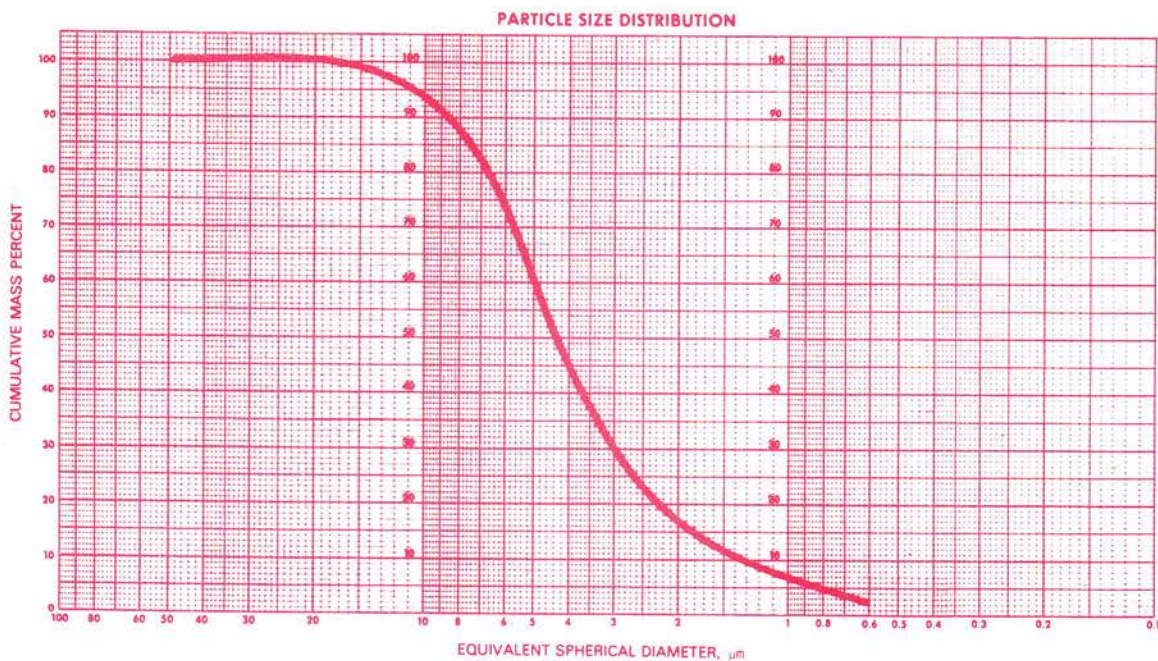


AMERICAN TRIPOLI

TECHNICAL DATA

SENECA CREAM 15

PARTICLE DISTRIBUTION typical values.



CHEMICAL ANALYSIS (%) typical values.

CREAM TRIPOLI

SiO ₂	98.33	K ₂ O	0.09
TiO ₂	0.04	P ₂ O ₅	0.02
Al ₂ O ₃	0.71	CO ₂	0.01
Fe ₂ O ₃	0.20	Unreported	0.19
FeO	0.02	Loss on ignition	0.55
MnO	0.03	pH	6.2-7.0
MgO	0.06	Fusion point (°C)	1707
CaO	0.24	Bulk density (lb/cu. ft)	33
Na ₂ O	0.04	Oil absorption (g/100g)	42
		Specific Gravity	2.62

Other than a representation that the products sold by American Tripoli Inc. (ATI) will, on the average, meet the criteria set forth above, which is and shall be subject to confirmation by the purchaser. ATI makes no warranty, guaranty or representation of any kind, express or implied, and specifically EXCLUDES any and all WARRANTIES OF MERCHANTABILITY AND FITNESS FOR A PARTICULAR PURPOSE. ATI makes no other warranties beyond those contained herein and, if any of the products in any shipment do not conform to the warranty contained herein, purchaser's sole remedy will be to provide notice to ATI of such non-conforming product. Such notice shall be given within fourteen (14) days of delivery, and ATI will, at the option and if it determines the product does not conform, either promptly replace the non-conforming product or refund the purchase price paid for the non-conforming product. In no event shall ATI be liable for special, indirect or consequential damages nor shall ATI be liable for damages of any kind arising from the presence or use of the products, whether used singly or in combination with other substances. ATI disclaims any liability arising from the use of the products which may infringe upon patents applied for, pending or existing. No claim of any kind arising hereunder shall be greater than nor shall ATI in any event be liable for an amount in excess of the amount of purchase price of the products in respect of which such claim is made.

Samples and additional information are available from American Tripoli Inc.
 P.O. Box 489, Seneca, Missouri 64865 • Phone (417) 776-2216 • Fax No. (417) 776-2217